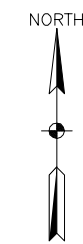
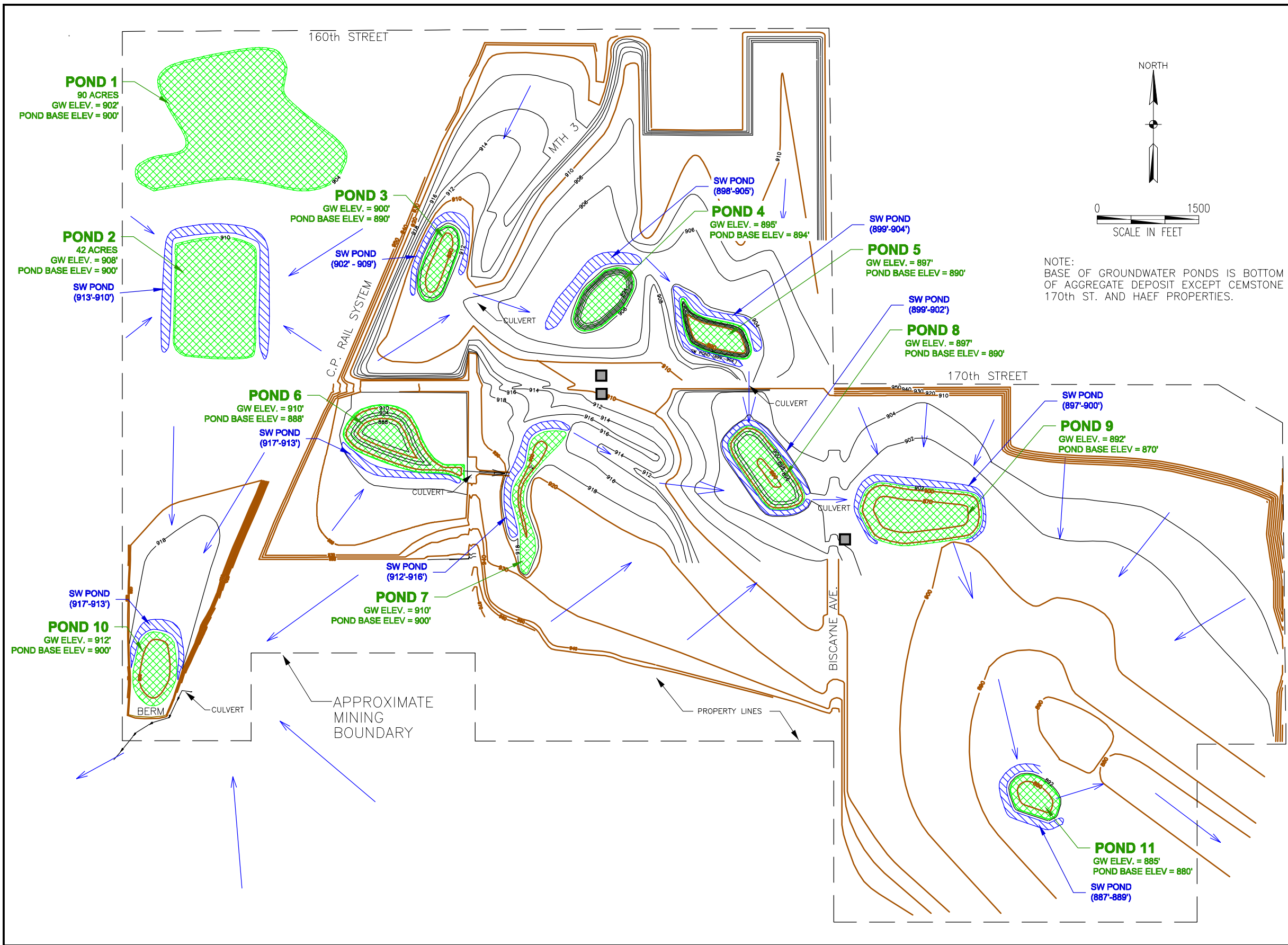


Y:\GIS\Projects\Empire_Township\maps\Fig13R_Proposed_End_Use_Plan.dwg Oct 18, 2005



NOTE:
BASE OF GROUNDWATER PONDS IS BOTTOM
OF AGGREGATE DEPOSIT EXCEPT CEMSTONE
170th ST. AND HAEF PROPERTIES.

EXPLANATION

- PROPOSED 10' CONTOUR
- PROPOSED 2' CONTOUR
- PROPOSED STORMWATER FLOW
- PROPOSED MINING AREA
- ▨ PROPOSED GROUNDWATER POND
(GROUNDWATER AND POND BASE
ELEVATIONS APPROXIMATE)
- ▨ PROPOSED STORMWATER POND
(ELEVATIONS APPROXIMATE)
- POTENTIAL LOCATION OF GRAVEL
WASHING PITS.
(NOTE: WASHING PITS WILL BE
IN USE DURING MINING OPERATIONS
AND WILL BE REMOVED PRIOR TO
CONSTRUCTION OF THE END-USE PLAN.)

Sand & Gravel Mining
and Accessory Uses

Figure 13R
Proposed End Use Plan

